

Connecticut

WOODALL'S Complete Site Listings

All privately-owned campgrounds personally inspected by Woodall Representatives Greg and Maureen Baron. Unless otherwise noted, all parks listed have flush toilets and hot showers.

Cornwall Bridge

█ **Housatonic Meadows State Park** (Litchfield) From jct US-7 & Hwy-4: Go 1-1/2 mi NE on US-7. **FACILITIES:** 95 sites, 95 no hkups, 2 sites for tents only, ice, picnic tables, fire rings, wood. **RECREATION:** canoeing, kayaking, river fishing, horse-shoes, sports field, hiking trails. No pets. Open Mid Apr - Dec 31. Alcohol prohibited. Phone: (860)672-6772

Jewett City

(E) **Hopeville Pond State Park** (New London) From Connecticut Tpk (exit 86): Go 1 mi E on Hwy 201. **FACILITIES:** 80 sites, 80 no hkups, ltd groc, picnic tables, fire rings, wood. **RECREATION:** river swim, boating, canoeing, kayaking, ramp, river/pond fishing, horseshoes, sports field, hiking trails, v-ball. No pets. Partial handicap access. Open Mid Apr - Sep 30. Phone: (860)376-2920

Kent

(W) **Macedonia Brook State Park** (Litchfield) From jct US 7 & Hwy 341: Go 1-1/2 mi NW on Hwy 341, then 2 mi N on Macedonia Brook Rd. **FACILITIES:** 51 sites, 51 no hkups, 11 pull-thrus, non-flush toilets only, picnic tables, fire rings, wood. **RECREATION:** pavilion, river swim, stream fishing, horse-shoes, sports field, hiking trails. No pets. Open Apr 15 - Sep 30. No showers. Reservations accepted Apr 20 - Labor Day. Phone: (860)927-3238

New Preston

█ (W) **Lake Waramaug State Park** (Litchfield) From jct US 202 & Hwy 45: Go 1-1/2 mi N on Hwy 45 to Lake Waramaug Rd, then follow signs around the lake. **FACILITIES:** 77 sites, 77 no hkups, 3 sites for tents only, ltd groc, ice, picnic tables, fire rings. **RECREATION:** pavilion, lake swim, boating, canoeing, 6 canoe/4 pedal boat rentals, lake fishing, fishing supplies, sports field, hiking trails. No pets. Open Weekend prior to Memorial Day - Sep 30. Phone: (860)868-0220

Niantic

(W) **Rocky Neck State Park** (New London) From jct Hwy-161 & Hwy-156: Go 3 mi W on Hwy-156. **FACILITIES:** 160 sites, 160 no hkups, ltd groc, ice, picnic tables, fire rings, wood. **RECREATION:** pavilion, saltwater swim, saltwater fishing, sports field, hiking trails. No pets. Partial handicap access. Open May - Sep 30. Phone: (860)739-5471

Norwich

See listing at Preston

Preston

█ (N) **Hidden Acres Family Campground** (New London) From jct I-395 (exit 85) & Hwy 164: Go 1 mi S on Hwy 164, then 1-1/2 mi S on George Palmer Rd, then 1-1/2 mi W on River Rd. Enter on R.



◆◆◆◆**FACILITIES:** 190 sites, 50 W&E, 125 full hkups, (20/30/50 amps), 15 no hkups, many extd stay sites (summer), 2 pull-thrus, 15 sites for tents only, WiFi Instant Internet at site, WiFi Internet central location, cabins, shower\$, laundry, ltd groc, ice, picnic tables, fire rings, wood.

◆◆◆◆**RECREATION:** rec hall, rec room/area, equipped pavilion, coin games, swim pool, river swim, boating, no motors, canoeing, kayaking, river/pond fishing, golf nearby, bsktball, playground, shuffleboard court, activities, horseshoes, sports field, v-ball.

No camping motorcyclists. Pets welcome. Partial handicap access. Open May 1 - Columbus Day. 3 day minimum, on holiday weekends by reservations. Rate in 2010 \$35-42 per family. MC/VISA. Member ARVC, CCOA.

Phone: (860)887-9633
Address: 47 River Rd, Preston, CT 06365
Lat/Lon: 41.55306/-72.01448
Email: hacampgd@aol.com
Web: www.hiddenacrescamp.com
SEE AD NORWICH THIS PAGE

Southbury

█ (W) **Kettletown State Park** (New Haven) From jct Hwy 67 & I-84 (exit 15): Go 1/10 mi SE on Hwy 67, then 3-1/2 mi S on Kettletown Rd, then follow sign 3/4 mi W on Georges Hill Rd. **FACILITIES:** 68 sites, 68 no hkups, 9 sites for tents only, picnic tables, fire rings. **RECREATION:** lake swim, boating, canoeing, lake fishing, sports field, hiking trails. No pets. Partial handicap access. Open May 18 - Oct 1. Phone: (203)264-5169

Thomaston

(S) **Black Rock State Park** (Litchfield) From jct Hwy 109 & US 6: Go 1/4 mi S on US 6. **FACILITIES:** 96 sites, 96 no hkups, ltd groc, ice, picnic tables, fire rings, wood. **RECREATION:** pond/stream fishing, sports field, hiking trails. No pets. Partial handicap access. Open Apr 16 - Sep 30. Facilities fully operational Jun - Sep 30. Alcohol free park. Phone: (860)283-8088

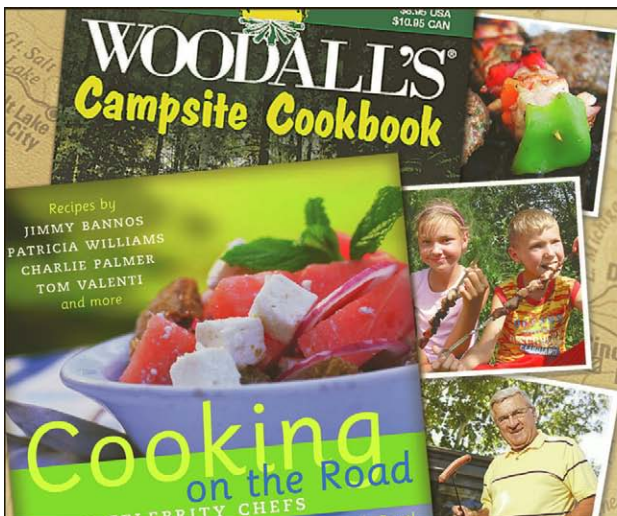
Hidden Acres
FAMILY CAMPGROUND

Close to Casinos
Great Fishing

47 River Road, Preston, CT
(860) 887-9633

www.hiddenacrescamp.com
See listing at Preston, CT

Read articles about
Family Camping - updated
every day at woodalls.com



Inspiration Begins Here

To order, call 1-877-680-6155 and mention these codes to get blow-out pricing. **Campsite Cookbook:** promo code **26H9**, for a price of only **\$4.95**. **Cooking on the Road with Celebrity Chefs:** promo code **287W**, for a price of **\$8.95**.

Also connect with us online at woodalls.com, blog.woodalls.com and facebook.com/woodalls